



# Aveiro region tour

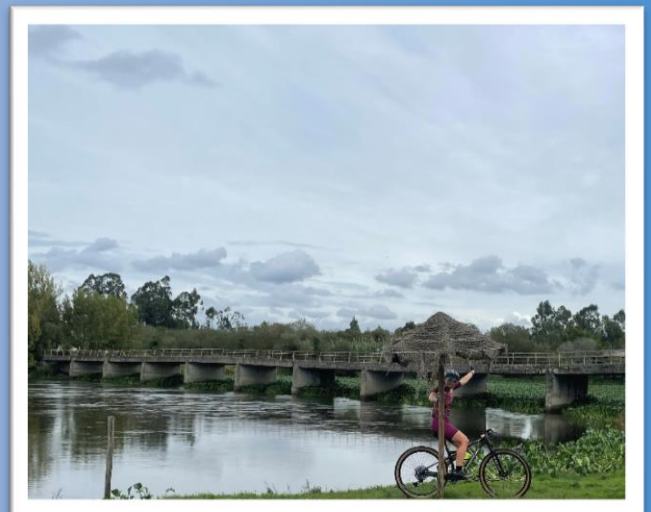
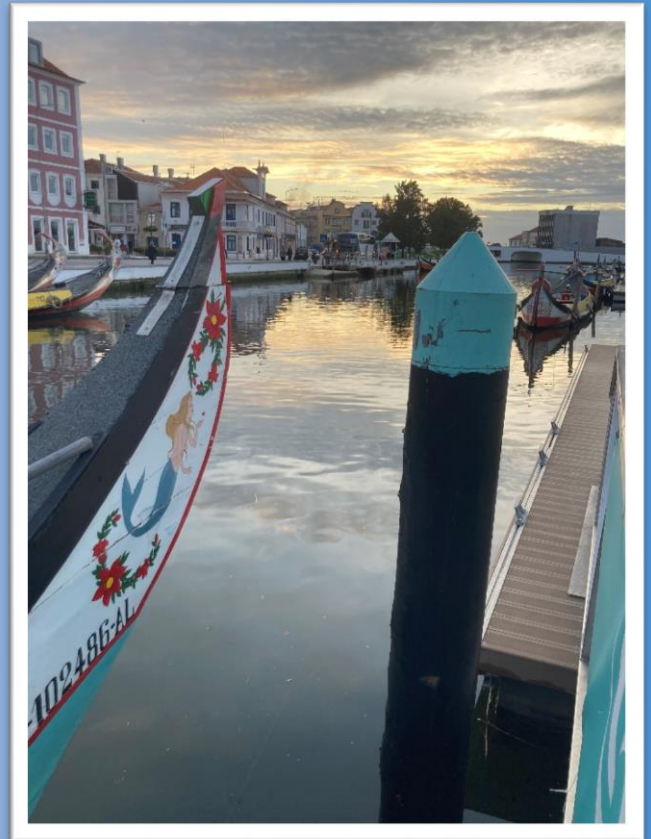
**Amazing cycling holiday discovering Aveiro region by bike**

**The tour takes you around Aveiro region, from salt ponds near the coastline to the depths of forest with old mines, small schist villages and then back to the plains with vineyards.**

**Tour consists of 4 days of riding. The tour is self-guided with our support car always nearby and with planned stops during the rides.**

**The course is permanently marked by signs and we provide GPS tracks from hotel to hotel. Tour can be guided on request.**

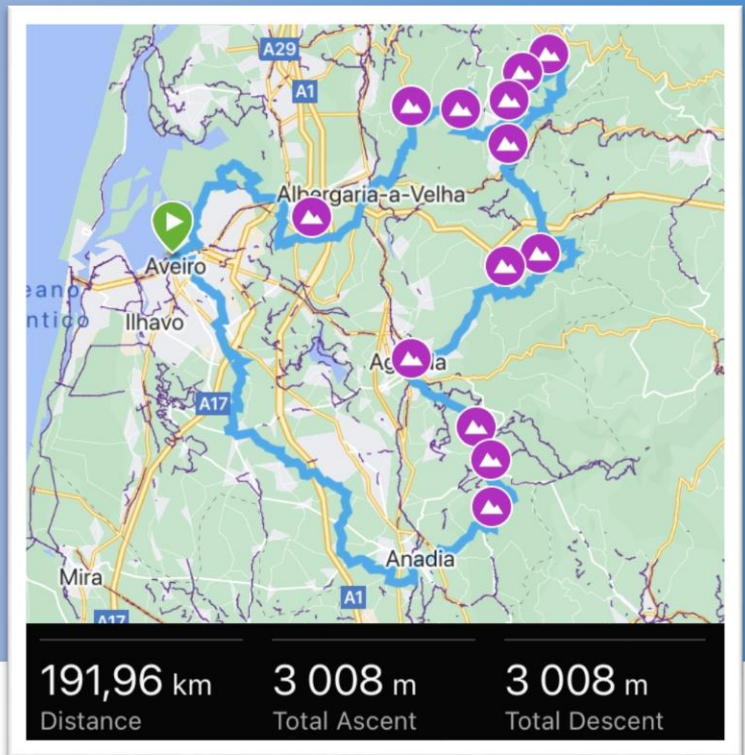
**Aveiro region tour is suitable for every fitness level.**



# Tour overview



Tour has 4 stops/towns where we will be staying.  
The start/end town is chosen by convenience of your group,  
in this brochure we suggest Aveiro.  
Main stops are Aveiro, Pessegueiro do Vouga, Águeda and Curia.  
Total distance for the tour is around 200 km.  
Tour is self-guided.



## Elevation





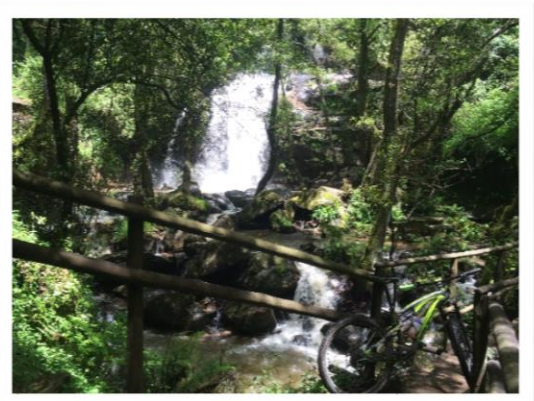
# Day 1



**We set off from the region capital Aveiro. Passing salt ponds and fishers areas with no hills in sight.**

**After passing through beautiful little village Frossos the climbs begin.**

**Towards the end of the day tour passes old mines hiding away in the forests of Sever do Vouga.**







# Day 2

Route sets out from Pessegueiro do Vouga and right away climbs to Talhadas on small paved roads. The views from the top reward the climb.

Descending other side of the mountain, route passes small mountain village Lourizela, a lovely schist stone village.

Few more paved roads and day ends in „umbrella town“ Águeda.





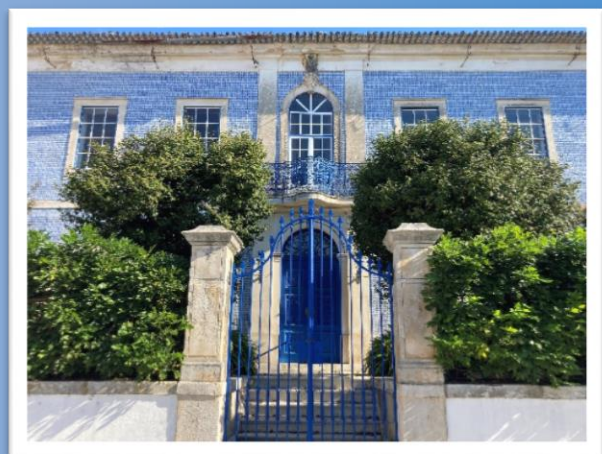
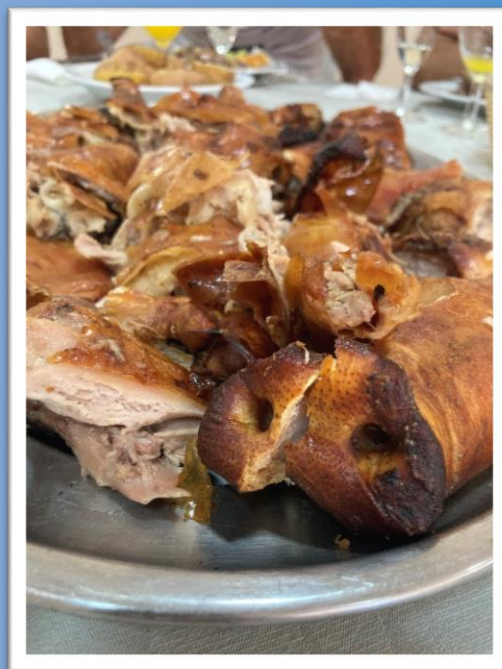
# Day 3



Day starts from Águeda and heads out on paved roads to the mountains.

Some dirt roads and little mountain villages on the way the route takes you to the famous sparkling wine and piglet region Bairrada.

Passing the city of Anadia and arriving to thermal town of Curia.





# Day 4



**Final day starts from Curia and navigates through many vineyards and then passing the outskirts of Aveiro.**

**It is an easier day with no climbing and easy paths towards the start point of our 4-day tour.**



# Overview



## Route plan

Aveiro – Pes. do Vouga  
Pes. do Vouga - Águeda  
Águeda – Curia  
Curia - Aveiro  
Total of approx. 200 km



## Included:

- 4 days cycling GPS tracks from hotel to hotel
- 4 day rental bike usage
- 5 nights at high quality rural hotels
- Buffet breakfast
- Permanently marked route
- Support crew for assistance
- Daily bag transfer between accommodations
- Certified coach and guide
- Civil Responsibility insurance

Discover Aveiro region with us!  
[www.mtbcamps.eu](http://www.mtbcamps.eu)

